

**HUON VALLEY**  
**FOOD HUB**



**Levers to get you from idea to action.**

Leah Galvin for HUON VALLEY FOOD HUB.

It started with a conversation and then a visualising workshop.

## CONTRIBUTORS



eat well  
tasmania



## WHAT PROBLEMS ARE WE TRYING TO SOLVE?



- High rates of household food insecurity versus state average
- Workforce and skills shortages in horticultural sector
- Increased demand for regionally grown fruit and vegetables
- Lack of co-ordination and collaboration across the food systems to meet local needs
- State Government policy focussed on export and trade only
- Poor diet related health outcomes in the Huon Valley community

## WHAT ARE THE ENABLERS?

- Builds on previous success and investments
- Social and bridging capital
- Strong cross-sectional engagement and alignment
- Local government policy and priorities
- Proven models that can be adapted for local need
- The geography of the Valley and proximity to large population centres
- Emerging local food culture

## OUR VALUES

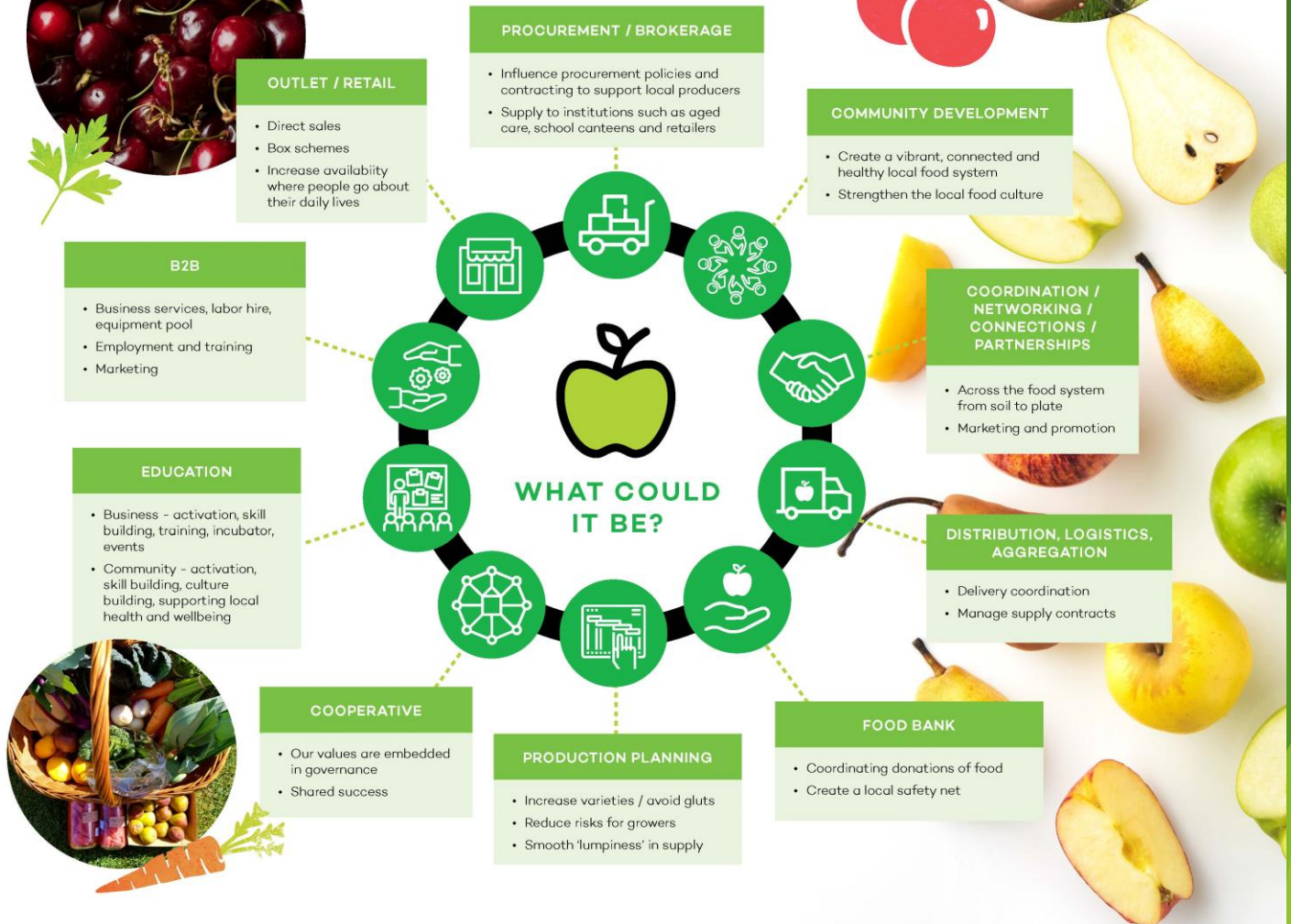
1. Community is at the heart of the model
2. It's a democratic economic model
3. Producing sustainable food through practices creating resilience and financial viability
4. Work with existing resources
5. Improves access to healthy food

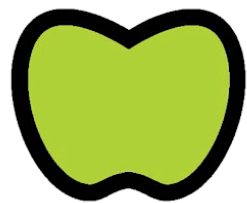
## CONTRIBUTORS



# HUON VALLEY FOOD HUB

*Growing a vibrant and connected food system that contributes to the health, social, economic and environmental outcomes of the Huon Valley.*





# What are the project outcomes?



Appoint a Project Officer to lead the project/project governance



Mapping of the local food system



Conduct codesign workshops with community around the Hub function/community engagement via social media/online surveys



Build capacity within the Council workforce



Deliver activation events (prototyping) to demonstrate what the function of the Hub might look like



Establish a Huon Valley Food Hub Coalition to have carriage of the Hub's progress beyond the project



Produce a business plan for the Hub.



HUON VALLEY  
**FOOD HUB**



# What were the key levers?

- ▶ 1. Leadership and planning
- ▶ 2. Diverse partners and supporters
- ▶ 3. The “problem/s”
- ▶ 4. Design/infographic - communication
- ▶ 5. Local Government strategies
- ▶ 6. Serendipity and \$\$\$
- ▶ 7. The unique lens - economic, social and environmental



Thanks for your interest.



leah  
galvin  
CONSULTING

