

Benchmarking the healthiness and environmental sustainability of campus food environments in Australia



A/Prof Gary Sacks

 @gary_sacks

2 February 2021



Universities ♥ a good ranking

TOP 9 UNIVERSITIES IN AUSTRALIA

Rank 2019	Institution
=32	University of Melbourne
49	Australian National University
=59	University of Sydney
69	University of Queensland
=84	Monash University
=96	University of New South Wales
134	University of Western Australia
=135	University of Adelaide
196	University of Technology, Sydney

THE WORLD
UNIVERSITY
RANKINGS

www.thewur.com

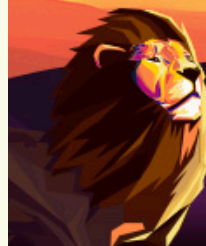
#THEunirankings



The Top Universities in Australia 2018



- 1 The Australian National University
- 2 The University of Melbourne
- 3 The University of New South Wales
- 4 The University of Queensland
- 5 The University of Sydney
- 6 Monash University
- 7 The University of Western Australia
- 8 The University of Adelaide
- 9 University of Technology Sydney
- 10 The University of Newcastle



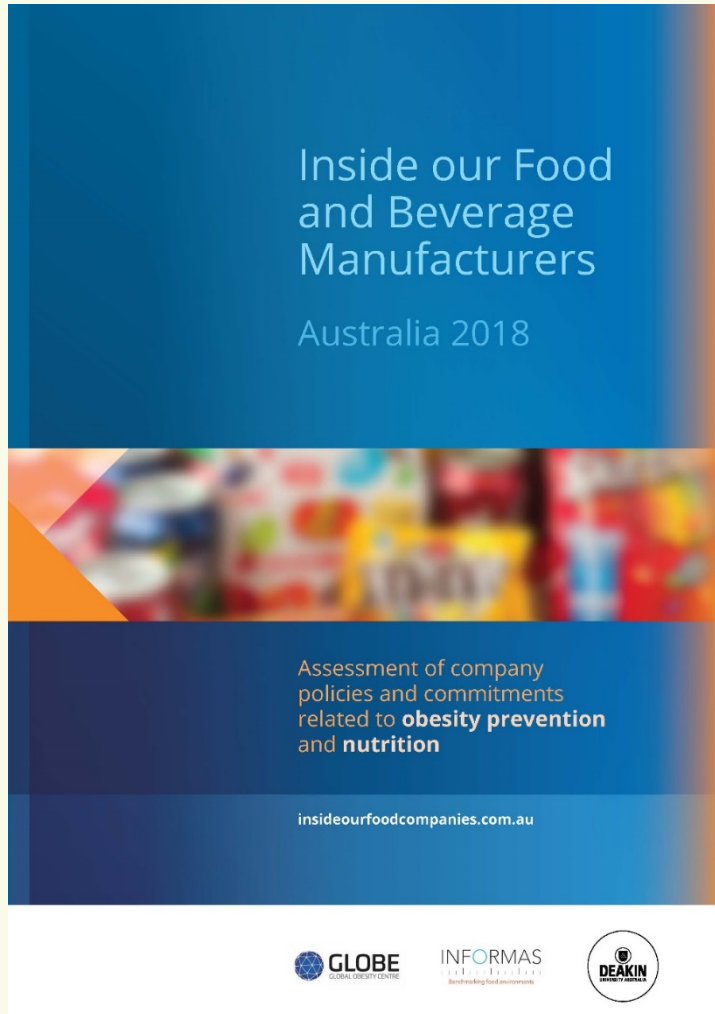
QS WORLD
UNIVERSITY
RANKINGS

2018 #QSWUR

GET THE FULL RESULTS: TOPUNIVERSITIES.COM/RANKINGS

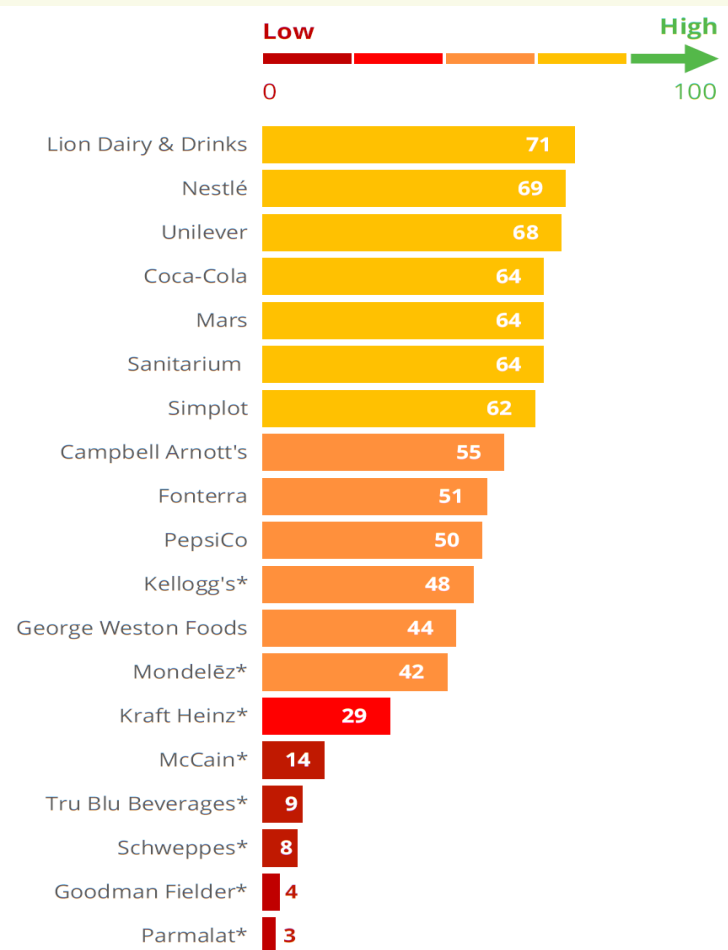


Benchmarking food environments can help draw attention to the health & environmental issues, and identify opportunities for improvement



www.insideourfoodcompanies.com.au

Assessment of company policies related to nutrition (out of 100)



* Assessment based on publicly available information only



Call to ban junk at supermarket checkouts



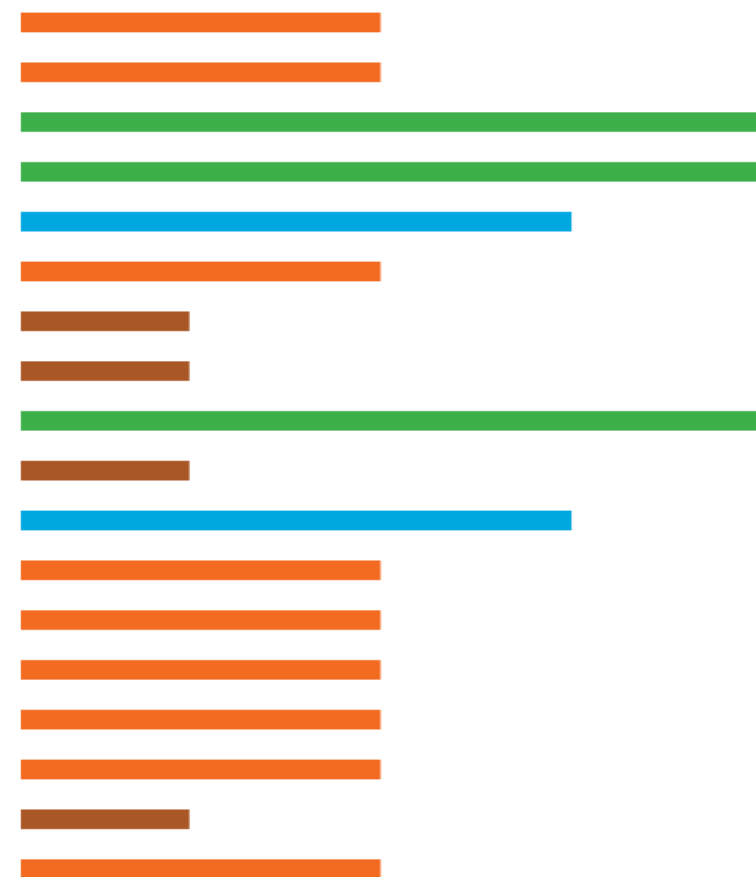
Assessment of government policies for obesity prevention (2017)

Federal government policies

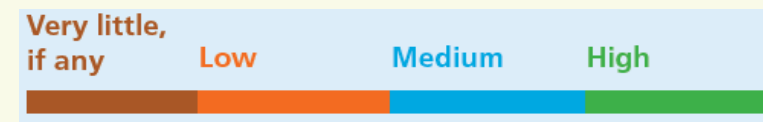
Level of implementation



Food composition	Food composition standards / targets for packaged foods
	Food composition standards / targets for out-of-home meals
Food labelling	Ingredient lists / nutrient declarations
	Regulatory systems for health and nutrition claims
	Front-of-pack labelling
Food promotion	Restrict promotion of unhealthy food in broadcast media
	Restrict promotion of unhealthy food in non-broadcast media
	Restrict promotion of unhealthy food in children's settings
Food prices	Minimise taxes on healthy foods
	Increase taxes on unhealthy foods
Food provision	Policies in schools promote healthy food choices
	Policies in public settings promote healthy food choices
	Support and training systems for public sector settings
	Support and training systems for private companies
Food retail	Retail store availability of healthy and unhealthy foods
	Food service outlet availability of healthy and unhealthy foods
Food trade	Trade agreement impacts assessed
	Protect regulatory capacity regarding nutrition



www.foodpolicyindex.org.au



Substantial variation at the State and Territory level (2017)



www.foodpolicyindex.org.au

		ACT	NSW	NT	QLD	SA	TAS	VIC	WA
Food labelling	Menu labelling	High	High	Very little, if any	High	High	Low	Medium	Very little, if any
	Restrict promotion of unhealthy food in non-broadcast media	Medium	Low	Very little, if any	Very little, if any	Very little, if any	Very little, if any	Very little, if any	Low
Food promotion	Restrict promotion of unhealthy food in children's settings	Medium	Low	Very little, if any	Low	Very little, if any	Low	Low	Low
	Policies in schools promote healthy food choices	High	High	Medium	High	Medium	High	Medium	High
Food provision	Policies in public settings promote healthy food choices	Medium	Medium	Medium	Medium	Low	Very little, if any	Medium	Medium
	Support and training systems for public sector settings	Medium	High	Low	Medium	Low	Medium	High	Medium
Food retail	Support and training systems for private companies	Medium	Medium	Low	Medium	Low	Medium	Medium	Medium
	Planning policies and zoning laws: unhealthy foods	Low	Very little, if any	Very little, if any	Medium	Low	Medium	Very little, if any	Very little, if any
Food retail	Planning policies and zoning laws: healthy foods	Low	Low	Very little, if any	Medium	Low	Medium	Low	Low
	Retail store availability of healthy and unhealthy foods	Low	Very little, if any	Medium	Low	Very little, if any	Low	Low	Low
Food retail	Food service outlet availability of healthy and unhealthy foods	Low	Low	Low	Low	Medium	Very little, if any	Low	Low

Level of implementation (with reference to international best practice)

Very little, if any Low Medium High

National Campus Food Environments Action Network

Vision

To help facilitate higher education institutions in Australia to transition to healthier and more sustainable campus food environments

Objectives

- Build a network that shares knowledge to accelerate changes in campus food environments in Australia
- Assess campus food environments against best practice standards to generate interest and commitment to change
- Support higher education institutions in Australia to implement policies and strategies to improve the healthiness and sustainability of campus food environments



- **Established in 2020**
- **Participation from 30+ operational staff and researchers (12+ universities)**



INSTITUTE FOR HEALTH
TRANSFORMATION



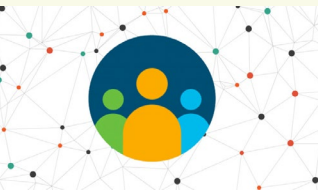
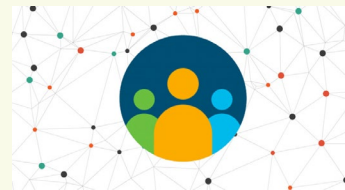
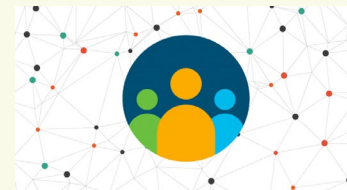
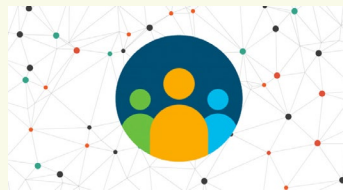
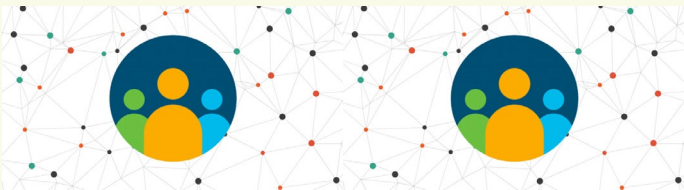
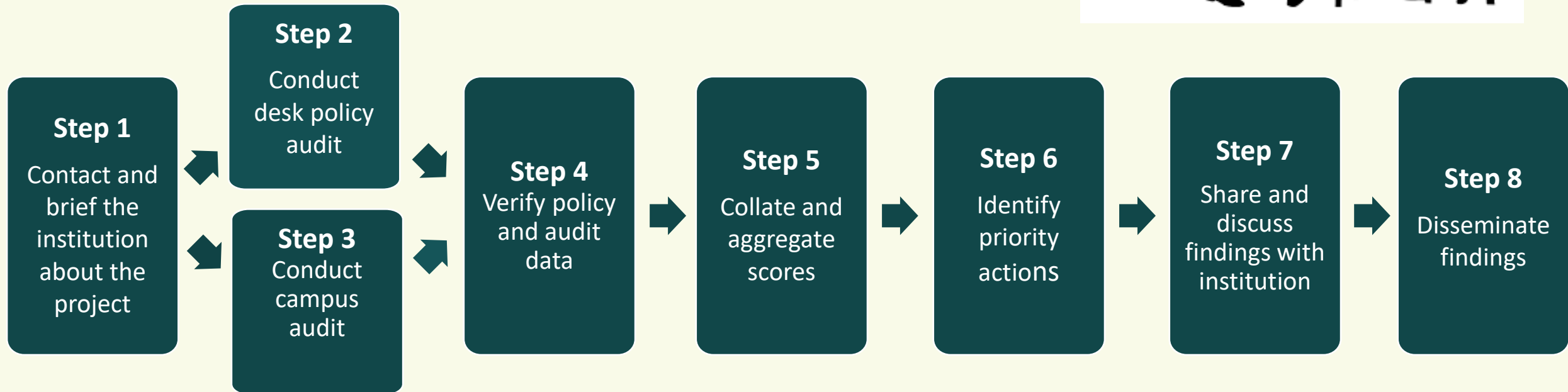
refresh
Centre of Research Excellence
Food Retail Environments for Health

University Food Environments (Uni-Food) Tool

- Developed to assess the healthiness and environmental sustainability of university food environments
- Indicators of good practice grouped into three components:
 - University systems and governance
 - Campus facilities and environments
 - Food retail environments
- Performance against each of the indicators is assessed, and scores aggregated to identify areas of progress and opportunities for further action

COMPONENT	DOMAIN	SUB-DOMAIN
University systems and governance	Leadership and planning	Policies and commitments
		Accountability and transparency
	Monitoring and reporting	Food environments
		Staff and student population
	Funding and resources	Funding
		Resources
	Stakeholder engagement	Platforms for interaction
		Student voice
Campus facilities and environment	Availability and accessibility	Drinking water
		Healthy, equitable and environmentally sustainable food
		Culturally appropriate food
		Vending machines
		Self-catering
		Operating hours
	Equity	Affordability
		Food relief
	Advertising and marketing	Advertising
		Marketing
	Catering and events	Catering
		Fundraising
		Student accommodation
	Personal and community	Community skills building
		Training and information
	Environmental impact	Waste and recycling
		Food packaging and serving ware
		Water
		Energy and Emissions
Food retail environment	Availability	Healthy, equitable and environmentally sustainable foods and
		Portion sizes
	Accessibility	Unhealthy foods in prominent locations
	Promotion	Unhealthy food and beverage advertising
	Price	Comparative price
		Price promotion
	Information	Nutrition information
		Sustainability information
		Cultural information
	Environmental impact	Food packaging and serving ware
		Food waste

Process for applying the Uni-Food tool



Get involved!

Progress to date

- ✓ Campus Food Network established
- ✓ Draft framework and assessment tool developed (12+ months process)
- ✓ Detailed protocol and training materials developed
- ✓ One pilot assessment conducted (December 2020)

Next steps

- ❑ Recruiting universities to participate in 2021
- ❑ Sharing of best practice
- ❑ Assisting universities to improve

Contact me to join in: gary.sacks@deakin.edu.au

